



**WOOD
GREEN**
The Animals Charity

As seen on
Channel 4's
The Dog
House

**LET'S
TALK**
about
PETS

Our education and community services

Helping professionals support pet owners and their pets

LET’S TALK about PETS!

At Wood Green, The Animals Charity, we want to start a conversation about pets. And that’s possible wherever you are or whatever your age may be!

EDUCATION SERVICES

We’re passionate about pet education, and that’s why we run **FREE** curriculum-linked workshops that teach young people about pets, while imparting an understanding of empathy and compassion towards others.

Schools and groups within Cambridgeshire can choose a Covid safe face-to-face visit or live digital session. If you’re based outside of this location, you can still enjoy our online sessions delivered via a platform of your choice.

“Great videos very interactive, and lots of opportunities to feedback. Thank you.”



“A huge thank you – it’s really beneficial for our children and community to have this knowledge from the workshops.”



Whether you’re a primary or secondary school teacher, youth group, Beaver or Brownie group leader **we’d love to get you talking about pets!**

SESSION 	AGE RANGE	KEY LINKS
How Wood Green help in your community (15-30 mins) A short assembly or tutorial session that gives an overview of our vital work, supporting pets and people in your community . This is a great introduction to a whole day of workshops for primary schools or project work for secondary schools.	All	SMSC British Values Speaking and listening
“Make Henry Hamster a happy home!” workshop (30 mins) Henry the toy hamster needs a new home. In pairs, pupils choose a cage, bedding, toys and friends and then see if Henry’s happy!	Rec KS1	Speaking and listening
“Woody’s dog safety” workshop (30-45 mins) A fun and engaging workshop where pupils discover what dogs like and don’t like, and how to stay safe around them.	Rec KS1 KS2	SMSC Speaking and listening
“What makes a dangerous dog” workshop (up to 1 hour) In this lively workshop, young people explore the needs of dogs, challenge their understanding of dangerous dogs, and get tips on how to stay safe around canine friends.	KS3 KS4 Youth groups	SMSC British Values Speaking and listening
“British values and the five welfare needs” workshop (45 mins-1 hour) This workshops teaches children the five welfare needs of pets, and how they relate to responsible pet ownership. With interactive activities and discussions , this workshop empowers pupils to make a difference to pets in their local communities.	KS2	SMSC British Values Speaking and listening
‘The mental health of our pets’ workshop (up to 1 hour) Mental health is a hot topic for young people, but what about the mental health of our pets? Explore how the basic needs of pets relate to their mental health, and discover how to make a difference to the lives of pets in your local community.	KS3 KS4 Youth groups	SMSC British Values
STEM dog club (6 x 45 mins-1 hour) This 6-week club develops students’ scientific thinking and understanding about dogs – perfect for lunchtimes or after school. Limited availability and offered in selected areas only.	KS3	SMSC Science
Self-led pet care club (6 x 30-45 mins) Love pets? Looking for a fun club to lead over a half term? Our easy-to-teach Pet Club has everything you need to run your own club, from lesson plans to videos. By the last session, young people taking part will develop their role as pet ambassadors, sharing their new skills and knowledge across the school community.	KS2 Youth groups	SMSC British Values Personal development
Self-led tutor time/debate material Want to spark a great debate in a class? Looking for new ways to engage with a group? Our podcast is a fantastic tool to get young people thinking, and talking, about pet-related subjects. Listen to chats about a range of topics now at woodgreen.org.uk/greenroompodcast	KS3 KS4 KS5 Youth groups	SMSC British Values Speaking and listening



To book a school or group session, or to enquire about a bespoke workshop or project, simply pop us an email at community@woodgreen.org.uk or call **0300 303 9333** ext 1282





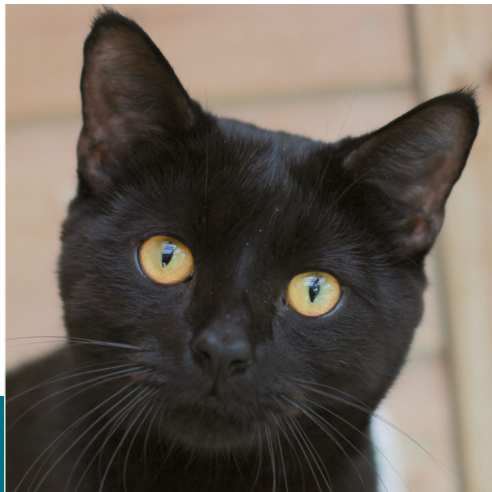
OUTREACH SERVICES SUPPORT FOR PETS

Education is at the heart of our work, but it isn't just about working with schools and groups. We also help to keep pets and owners together when times are difficult, offering short-term practical support and long-term advice. This includes helping people in need of pet food and supplies, providing expert advice on training, and carrying out health and wellbeing checks through home visits. We can even help with financial support towards vet costs and neutering.

"Thank you so much to the Wood Green team for your absolutely amazing professional support and advice. You have helped us in so many ways."

TRAINING FOR PROFESSIONALS

If you work with adult pet owners, perhaps through social work or community housing, we can provide your team with guidance and training to support owners and their pets. Training includes recognising pets or people at risk, staying safe when visiting properties, and promoting safe human and animal relationships.



MOBILE PET HEALTH AND WELLBEING SESSIONS

Did you know we're able to visit your local area? With our community vehicle, Dennis, we can offer a **safe and private space** for pet owners to hop on with their pets and discuss any worries or concerns. As part of this, we provide tailored pet health and wellbeing sessions, covering everything from nail clipping and microchipping to advice on behaviour and training.

EDUCATION SERVICES

community@woodgreen.org.uk
or call **0300 303 9333 ext 1282**

OUTREACH SERVICES

outreach@woodgreen.org.uk
or call **0300 303 9333 ext 1282**