

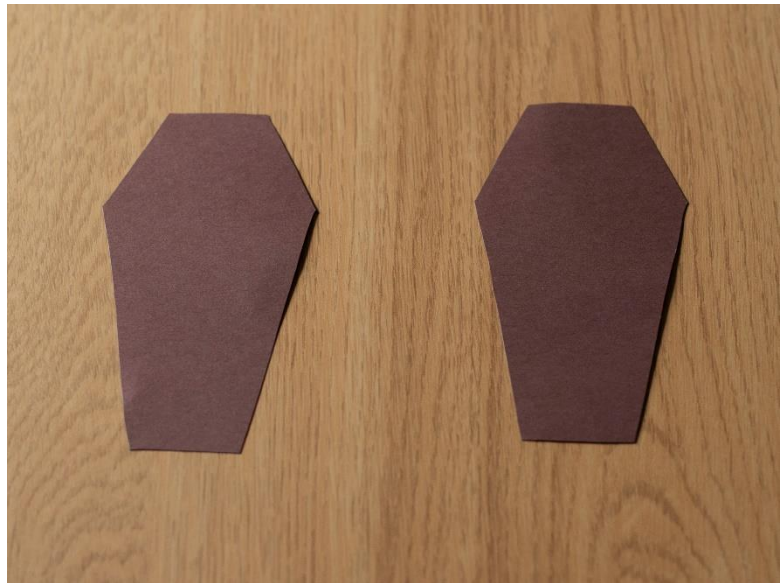
## Coffin Enrichment Feeder

### Supplies:

- 2 x A4 Sheets of Brown Card Stock
- Pencil
- Ruler
- Scissors
- Double-Sided Tape or Non-Toxic Glue

### Instructions:

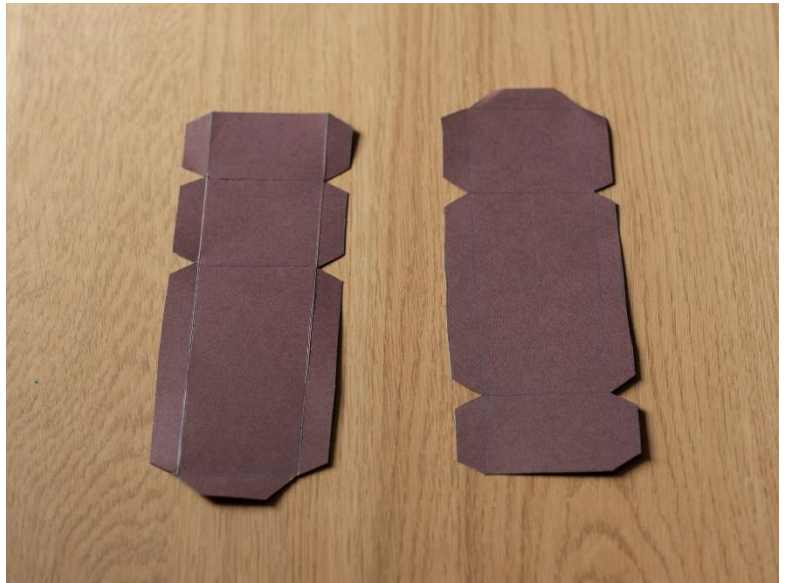
1. Cut out two of the coffin bases onto your brown card stock from the template provided



2. Cut a hole out of the centre of one of your coffin bases- this will be the top of your coffin.



3. Cut out the side pieces for your coffin that are provided on the template.



4. Bend the side pieces that are indicated as grey on the template.



5. Glue or tape the top and bottom pieces of your coffin to the sides.



6. Your coffin treat feeder is now complete. Place treats or dry cat food into your coffin when you are ready to use it. Your cat should use their paws to get the food out.

